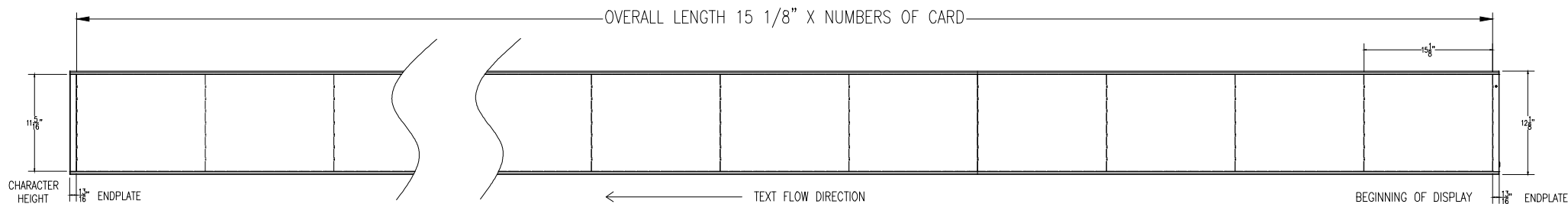
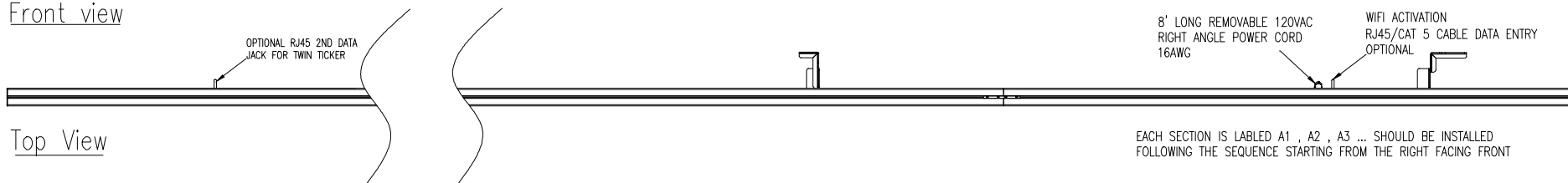


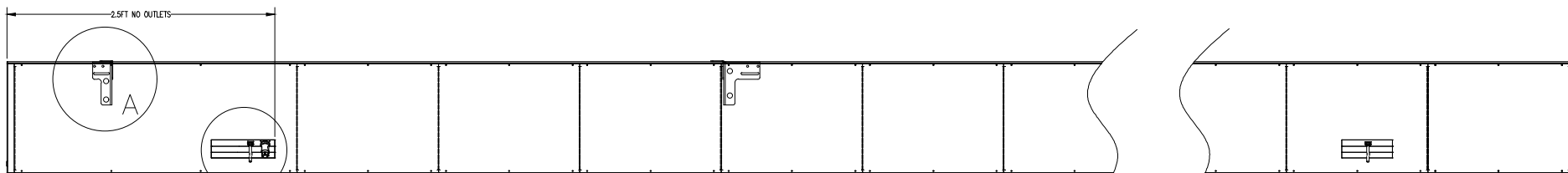
48H PIXEL 6MM RIGID CABINET LED DISPLAY



Front view



Top View

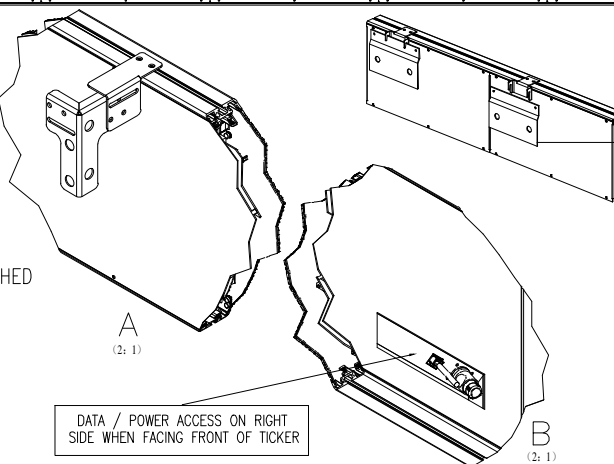


Rear View

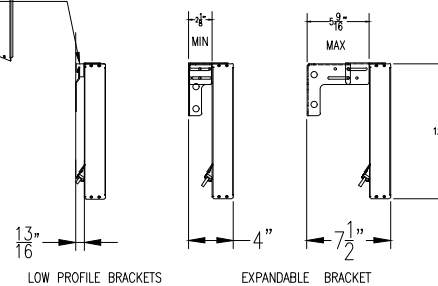
POWER OUTLET LOCATION
OUTLETS CAN BE LOCATED BEHIND SIGN.
SIGNS LONGER THAN 69FT REQUIRE AN ADDITIONAL
DEDICATED OUTLETS EVERY 69FT OF SIGN.

SPECIFICATIONS:

- PIXEL PITCH : .23" (6MM)
- COLOR: RGB (FULL COLOR)
- CHARACTER HEIGHT: 11.3 INCH (48H)
- ELECTRICAL REQUIREMENTS: 120VAC-220VAC/SINGLE PHASE MANUALLY SWITCHED
@ 120 VAC INDOOR - 20 WATTS/FT
POWER INPUT: POWER CORD
- DATA: XPICO WIFI OR ETHERNET
- CHASSIS METAL & FINISH: ALUMINIUM WITH EXTRUDED BLACK POWDER COAT
- SIGN MOUNTING: WALL MOUNT & CHAIN MOUNT
- WEIGHT : 3.55 LBS/FT



EACH SECTION EQUIPPED WITH 2 SETS OF MOUNTING BRACKETS, ATTACHED TO TICKER EQUAL DISTANCE APART FROM ITS ENDS



Side View

COMPANY _____	TITLE _____	
SIGNED _____	DATE _____	
PROJECT RISETICKER SHOP DRAWING		
TITLE TWIN LED TICKER DISPLAY (48 PIXEL-6MM)		
DRAWING NO RISETICKER-486F		
SCALE : 1 / 1	DRAWN BY: JHW	DATE : 11/16/22