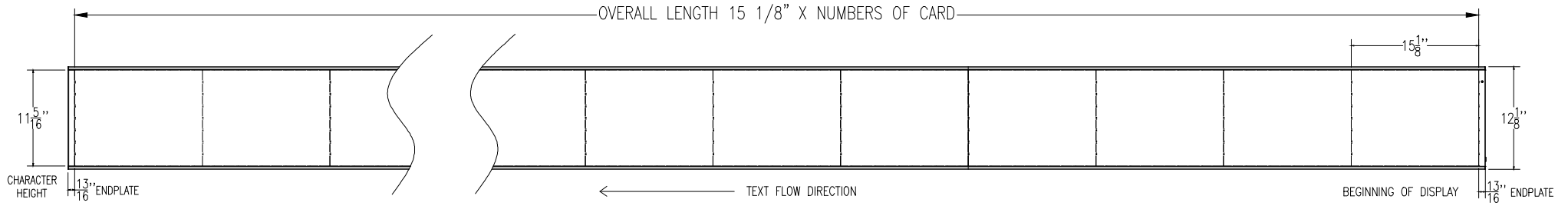
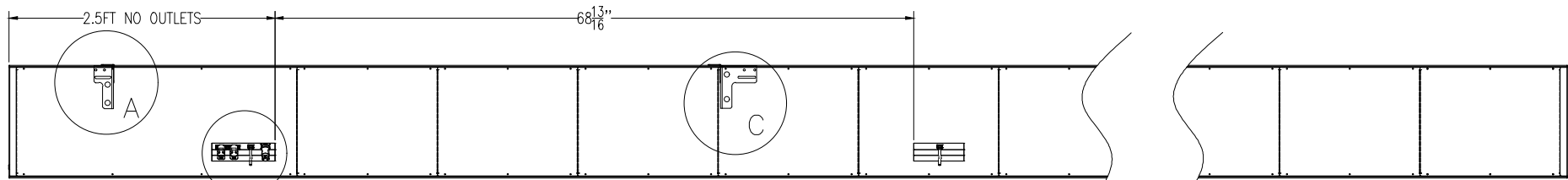


48H PIXEL 6MM RIGID CABINET LED DISPLAY



Front view

Top View

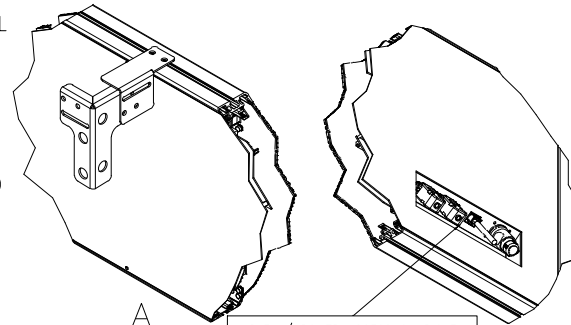


Rear View

POWER OUTLET LOCATION
OUTLETS CAN BE LOCATED BEHIND SIGN.
SIGNS LONGER THAN 69FT REQUIRE AN ADDITIONAL
DEDICATED OUTLETS EVERY 69FT OF SIGN.

SPECIFICATIONS:

- PIXEL PITCH : .23" (6MM)
- COLOR: RGB (FULL COLOR)
- CHARACTER HEIGHT: 11.3 INCH (48H)
- ELECTRICAL REQUIREMENTS: 120VAC-220VAC/SINGLE PHASE MANUALLY SWITCHED
@ 120 VAC INDOOR - 20 WATTS/FT
POWER INPUT: POWER CORD
- DATA: XPICO WIFI OR ETHERNET
- CHASSIS METAL & FINISH: ALUMINIUM WITH EXTRUDED BLACK POWDER COAT
- SIGN MOUNTING: WALL MOUNT & CHAIN MOUNT
- WEIGHT : 3.55 LBS/FT

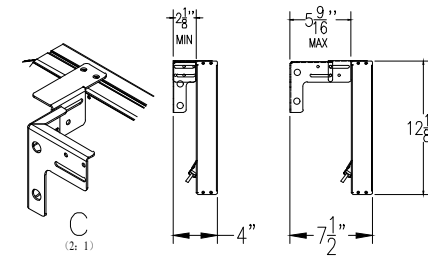


8' LONG REMOVABLE 120VAC
RIGHT ANGLE POWER CORD
16AWG

WIFI ACTIVATION
RJ45/CAT 5 CABLE DATA ENTRY
OPTIONAL

EACH SECTION IS LABELED A1 , A2 , A3 ... SHOULD BE INSTALLED
FOLLOWING THE SEQUENCE STARTING FROM THE RIGHT FACING FRONT

EACH SECTION EQUIPPED WITH 2 SETS OF
MOUNTING BRACKETS, ATTACHED TO TICKER
EQUAL DISTANCE APART FROM ITS ENDS



Side View



COMPANY _____	TITLE _____
SIGNED _____	DATE _____
PROJECT RISETICKER SHOP DRAWING	
TITLE TWIN LED TICKER DISPLAY (48 PIXEL-6MM)	
DRAWING NO RISETICKER-486F	
SCALE : 1 / 1	DRAWN BY: JHW
DATE : 4 / 13 / 22	