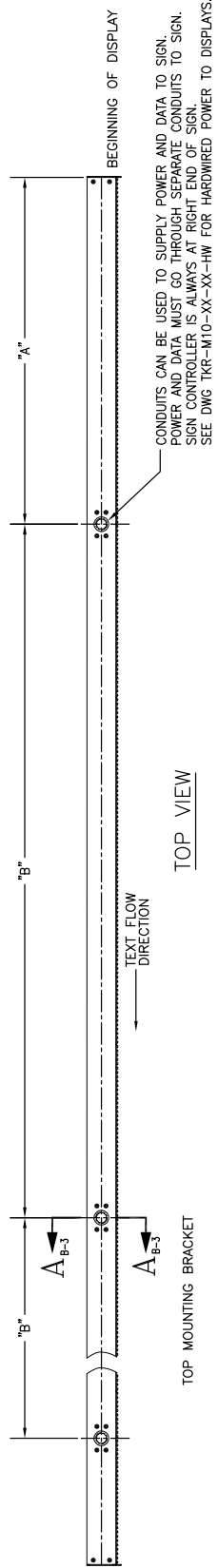


TKR-M10-XX-XX CEILING MOUNT SPECIFICATIONS RIGID & FLEX CABINET

REV	ECO	DESCRIPTION	DRAFT	DATE	APPROVED
A		INITIAL RELEASE	SUB	13/31/15	

PROPRIETARY
THIS DRAWING CONTAINS CONFIDENTIAL INFORMATION
AND IS THE PROPERTY OF SUNRISE SYSTEMS, INC.
REPRODUCTION OR DISSEMINATION OF THIS DRAWING
WITHOUT THE WRITTEN PERMISSION OF SUNRISE SYSTEMS, INC.
IS STRICTLY PROHIBITED.

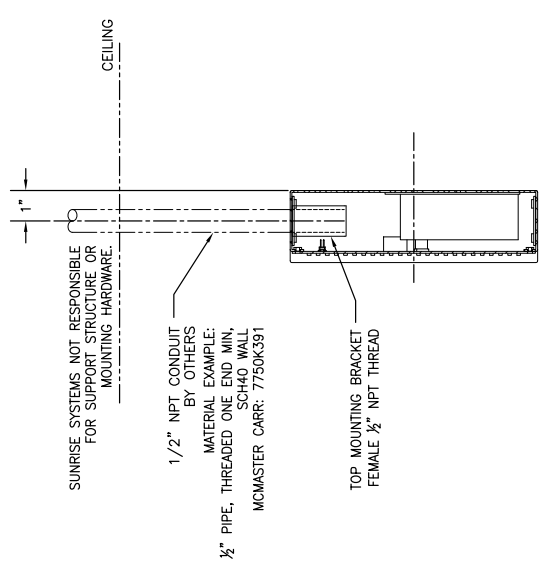


SPECIFICATIONS:

DIMENSIONS IN TABLE ARE BASED IN THE DISPLAYS IN THE STRAIGHT CONFIGURATION.
ARC LENGTH BETWEEN SUPPORTS MAY VARY ON FLEX DISPLAYS DEPENDING ON THE CURVE RADIUS.
CUSTOM ARRANGEMENTS AVAILABLE UPON REQUEST.

SIGN LENGTH	"A"	"B"	NUMBER OF SUPPORTS
8 FT LONG DISPLAY	2 FEET	4 FEET	2
9 FT LONG DISPLAY	3 FEET	3 FEET	2
10 FT LONG DISPLAY	3 FEET	4 FEET	2
11 FT LONG DISPLAY	3.5 FEET	4 FEET	2
12 FT LONG DISPLAY	2 FEET	4 FEET	3
13 FT LONG DISPLAY	2.5 FEET	4 FEET	3
14 FT LONG DISPLAY	3 FEET	4 FEET	3
15 FT LONG DISPLAY	3.5 FEET	4 FEET	3
16 FT LONG DISPLAY	2 FEET	4 FEET	4
17 FT LONG DISPLAY	2.5 FEET	4 FEET	4
18 FT LONG DISPLAY	3 FEET	4 FEET	4
19 FT LONG DISPLAY	3.5 FEET	4 FEET	4
20 FT LONG DISPLAY	2 FEET	4 FEET	5
21 FT LONG DISPLAY	2.5 FEET	4 FEET	5
22 FT LONG DISPLAY	3 FEET	4 FEET	5
23 FT LONG DISPLAY	3.5 FEET	4 FEET	5
24 FT LONG DISPLAY	2 FEET	4 FEET	6

PATTERN REPEATS



SUNRISE SYSTEMS, Inc.
PEMBROKE, MA 02359

PROJECT: RISE SHOP DRAWING
TITLE: CEILING MOUNT LED DISPLAY
SIZE: DRAWING NO. D | TKR-M10-XX-XX-CM | A

APPROVED FOR CONSTRUCTION: SUBMITTAL APPROVAL
 APPROVED FOR CONSTRUCTION AS NOTED:
 APPROVED FOR CONSTRUCTION AS NOTED & RESUBMIT:

SIGNED: _____ DATE: _____
 COMPANY: _____ TITLE: _____

SCALE: 1/8" = 1'-0" DRAWN: _____ DATE: 3/31/15
 SHEET: 1 OF 1 DRAWN: _____ DATE: / /

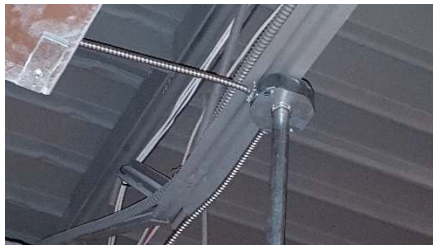
Ceiling Mount Guide

Overview:

Sunrise Systems ticker LED displays can be installed from the ceiling using some simple readily available materials. Please Consult the factory for the fitting layout based on your standard or custom sign configuration.

Support Structure:

There are a number of methods by which the ticker support pipes can be installed. Below is an example. Using Uni-Strut, a 1 gang standard ceiling electrical box & cover. This option allows you to run the electrical power into the box and down the pipe and into the ticker.



For the other pipes that do not require power or data entry through them, you could use the fitting found in the below link.

<http://www.mcmaster.com/#3115t354/=12jdhb1>

The link below can guide to an example of the required pipe to use.

<http://www.mcmaster.com/#standard-metal-pipe/=12hq9mt>

How to Attach to the top of the ticker:

A ceiling mount ticker is outfitted with any number of ½" female NPT fittings based on the ticker length and cabinet style (flex vs rigid). Below is a picture that shows a typical fitting.



The ticker fitting attaches to the ticker using #6-32 screws. To attach the ticker to the support posts you will need to remove the #6-32 screws so that the fittings are loose for the section that is going to be installed. Lift that section so that the support pipes coming down from the ceiling enter the holes in the top of the ticker. Next screw the loose fitting on to the end of the threaded pipe so it will hold the ticker in place. Do so for the each of the support points for that section. Once all the fittings have been attached to the support pipes, then the fittings can be screwed back to the ticker cabinet.