

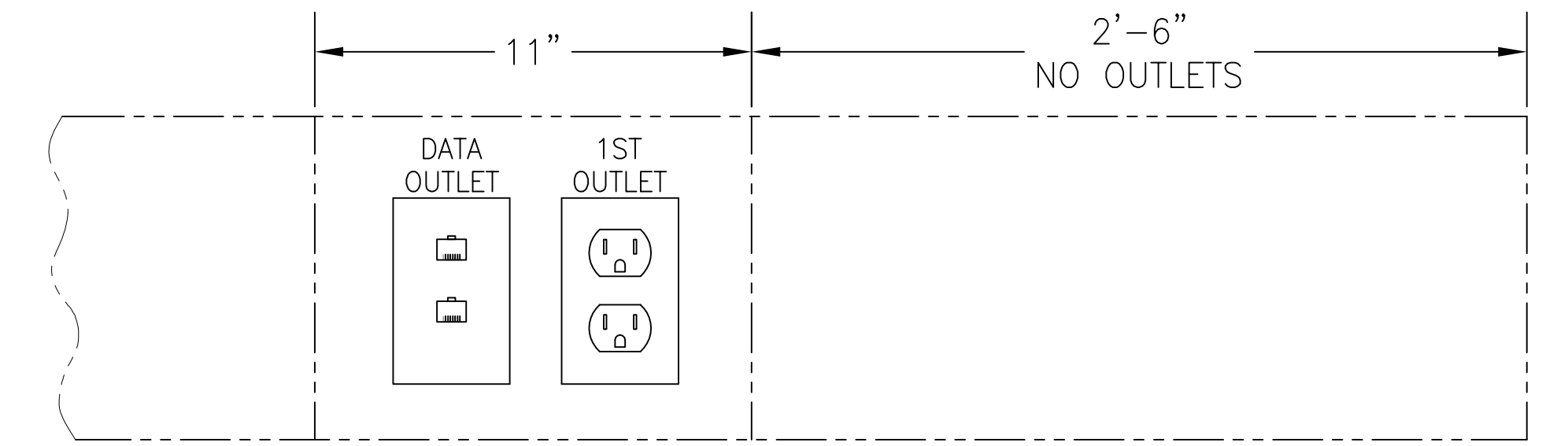
PROPRIETARY
THIS DRAWING CONTAINS CONFIDENTIAL INFORMATION
PROPRIETARY TO SUNRISE SYSTEMS INC. IT MUST NOT BE
REPRODUCED OR DISCLOSED TO OTHERS OR USED IN ANY
OTHER WAY, IN WHOLE OR IN PART EXCEPT AS AUTHORIZED
IN WRITING BY SUNRISE SYSTEMS INC.

24H PIXEL 7.2-INCH CHARACTER RIGID CABINET LED DISPLAY

REVISIONS					
REV	ECO	DESCRIPTION	DRAFT	DATE	APPROVED
A		INITIAL RELEASE	SJB	3/31/15	
B		WAS 34FT	SJB	6/8/15	
C		ADDED NOTE	SJB	12/18/15	
D		REVISED NOTES	SJB	3/28/16	

8-0" LONG REMOVABLE 120VAC
RIGHT ANGLE POWER CORD
IEC-320, C13 X NEMA-5-15P

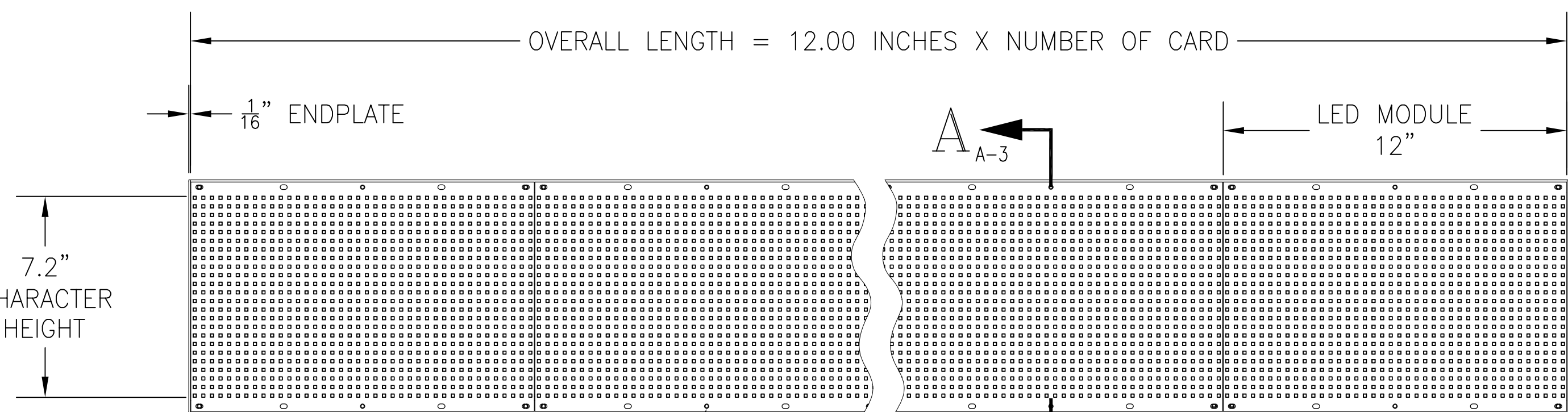
DATA ENTRY
REMOVABLE 6'-0" RJ45/CAT 5 CABLE



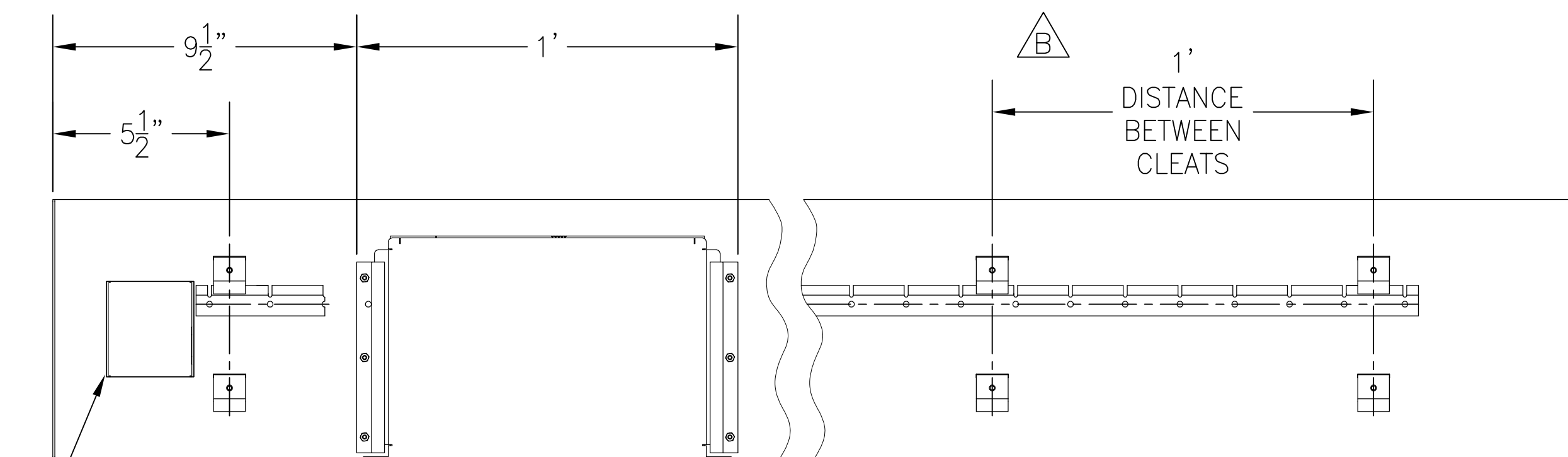
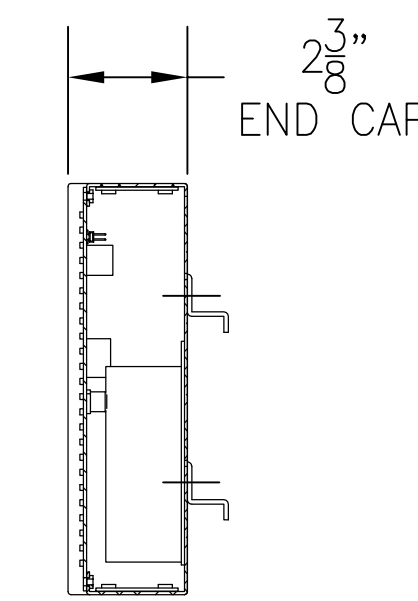
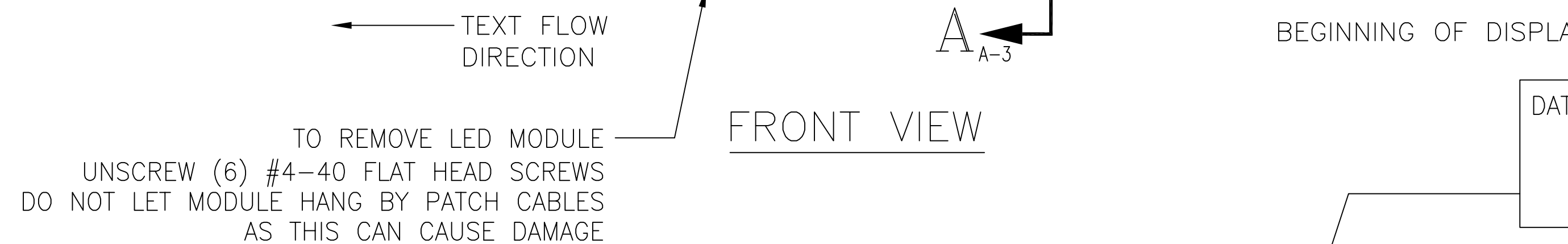
POWER OUTLET LOCATION

OUTLETS CAN BE LOCATED BEHIND SIGN.
SIGNS LONGER THAN 32FT REQUIRE ADDITIONAL
DEDICATED OUTLETS EVERY 32FT OF SIGN.

TOP VIEW

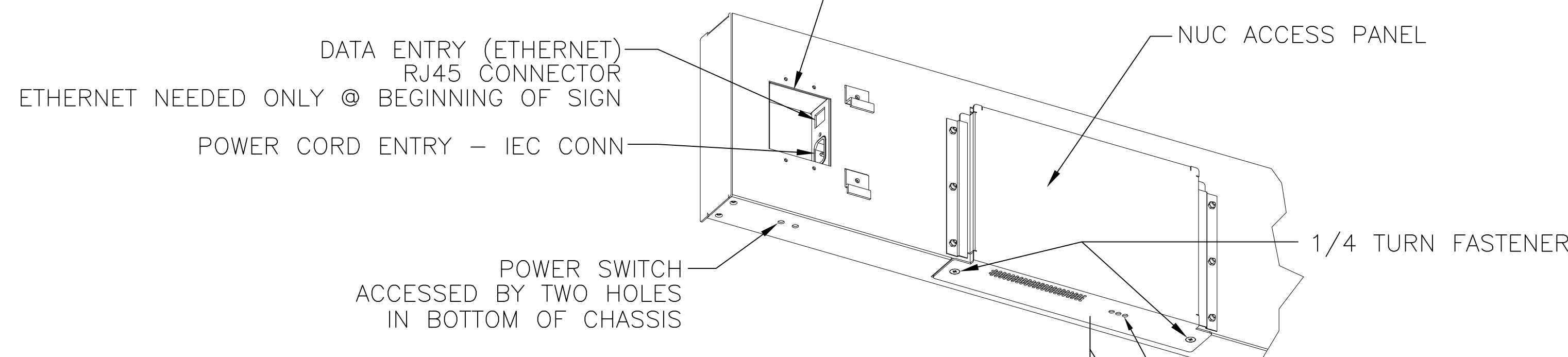


FRONT VIEW



REAR VIEW

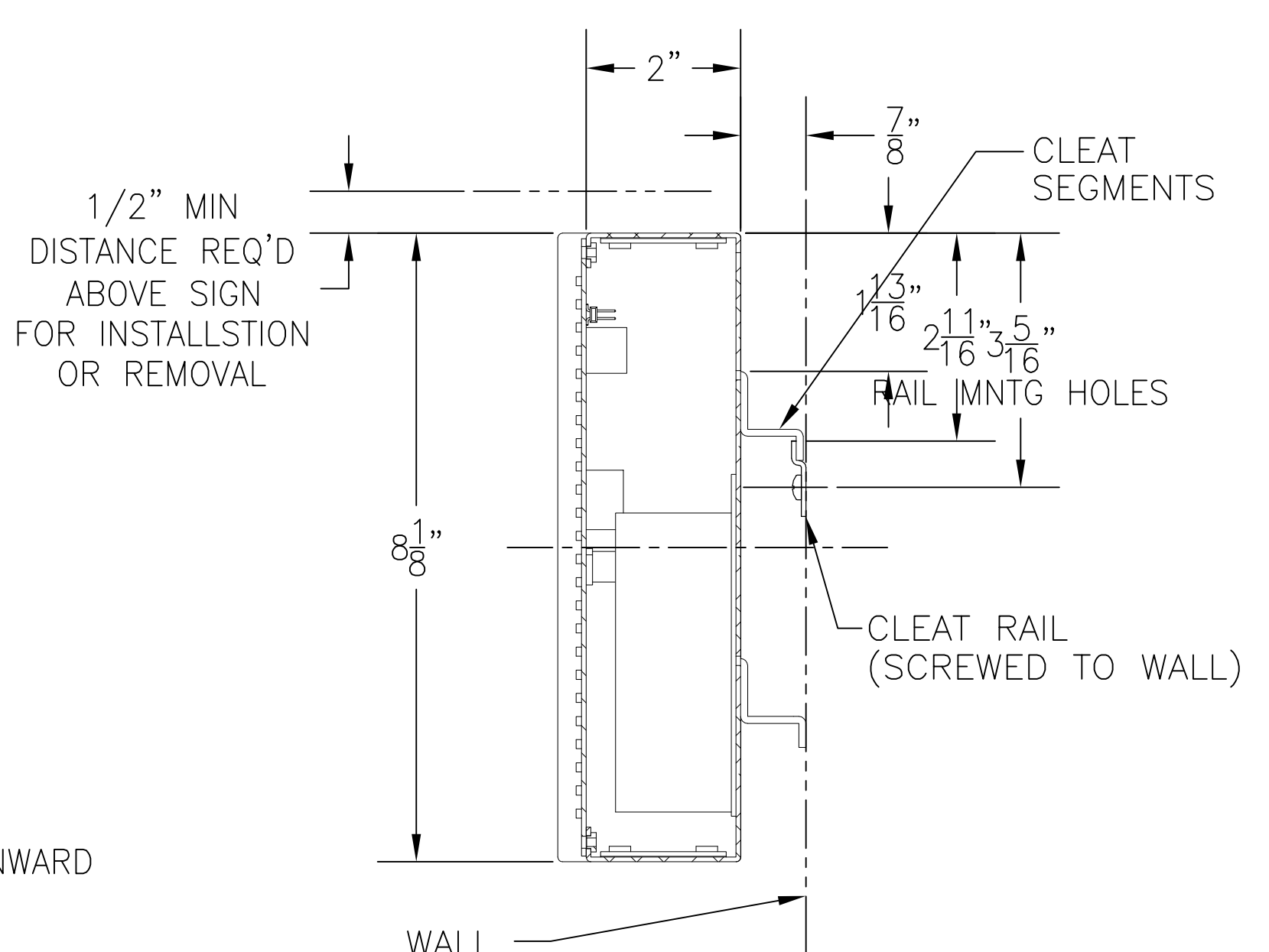
DATA/POWER ACCESS ON RIGHT SIDE
WHEN FACING FRONT OF TICKER.
SEE POWER OUTLET LOCATION
ABOVE FOR MORE INFO.



ISOMETRIC D-D

TYP
ETHERNET NEEDED ONLY @ BEGINNING OF SIGN

TO ACCESS NUC:
1. TURN FASTENERS
2. SLOWLY SLIDE DRAWER DOWNWARD



SECTION A-A

CROSS SECTION
TYP

SPECIFICATIONS:

- PIXEL PITCH: .3" (7.62mm)
- COLOR: RGB (FULL COLOR)
- CHARACTER HEIGHT: 7.2-INCHES (24H)
- ELECTRICAL REQUIREMENTS: 120VAC-220VAC/SINGLE PHASE MANUALLY SWITCHED
@ 120VAC INDOOR - 29 WATTS/FT
POWER INPUT: POWER CORD
- DATA: ETHERNET
- CHASSIS MAT'L & FINISH: ALUMINUM WITH BLACK POWDER COAT
- SIGN MOUNTING: CLEAT & RAIL METHOD
- WEIGHT: 4.2 LBS/FT

SUNRISE SYSTEMS, Inc.
PEMBROKE, MA 02359

SUBMITTAL APPROVAL

APPROVED FOR CONSTRUCTION

APPROVED FOR CONSTRUCTION AS NOTED

APPROVED FOR CONSTRUCTION AS NOTED & RESUBMIT

COMPANY: _____ DATE: _____

SIGNED: _____ TITLE: _____

PROJECT
RISE SHOP DRAWING

TITLE
24H RGB RIGID LED DISPLAY

SIZE	DRAWING NO.	REV
D	TKR-M10-24-72-R	D

SCALE	DRAWN	DATE
1/8	SJB	3/31/15
SHEET	DRAWN	DATE
1 OF 1	-	/ /